

PARKS FOUNDATION OF MIAMI-DADE

2013 REPORT ANNUAL



MIAMI-DADE
COUNTY



PARKS FOUNDATION OF MIAMI-DADE

2013
REPORT
ANNUAL

TABLE OF CONTENTS

- 1** Introduction
- 3** About Us
- 5** Programs
- 17** Projects
- 25** Events
- 31** Volunteers
- 33** Environment
- 41** Future
- 43** Recognition of Achievements
- 46** Partners
- 47** Program Summary



Letter from the President



The Parks Foundation of Miami-Dade is entering its tenth year with renewed energy. Over the past two years, we've more than doubled cash contributions that support parks and parks programming, and a new \$1 million goal is in place for 2014.

Our impact on the community has never been greater. Hundreds of children are receiving after-school and learn-to swim scholarships, keeping them safe when not in school. Undeveloped and aging park facilities are being revived. Our ambitious roster of events, which includes music and food festivals, movie nights and more, are showcasing our parks and open spaces to more and more residents and visitors.

Using GuideStar as a roadmap for further development, we've received our first audited financial statements, opening up new opportunities for corporate support. We're also harnessing the power of social media to further expand our reach.

Through a unique Parks-Parks Foundation partnership, we're committed to creating a greener, healthier, more economically vibrant Miami-Dade. Join us as we work to connect people and parks for life. Learn more at www.liveaparklife.org.

Dick Anderson
President
Parks Foundation of Miami-Dade

Letter from the Director



As someone who has spent a lifetime in and around parks, it has never been a more exciting time. We're steadily checking off items on our "to do" list as we seek to connect people and parks for life in an increasingly competitive sports and leisure industry.

The Sony Open will call Miami-Dade home for the next 50-years as part of a deal that will include major upgrades to Crandon Tennis Center, at NO cost to taxpayers. At the same time, we're embarking on negotiations to create an entertainment complex surrounding Zoo Miami that could rival Orlando's greatest attractions.

There's renewed focus on the profitability of both our golf and marina enterprises. New greens at Palmetto Golf Course and additional boat storage for Bill Bird Marina at Haulover Park are just two examples of improvements designed to help us compete with private facilities.

While the realities of the economy have us acting more like a business, our commitment to affordable programs and services has not wavered. Our Fit2Play Out-of-School Program, in partnership with the University of Miami, is being touted as a national model for the promotion of good health and is still among the best deals in town. Through a combination of nutrition education and recreation games, we're tackling the obesity epidemic without breaking the bank.

Corporate partners and a wave of new supporters brought to us by the Parks Foundation are filling gaps and helping us to keep our pulse on the needs of the community. With tremendous support from Miami-Dade County Mayor Carlos A. Gimenez we've launched the Youth Sports Championship Series and Bike305, encouraging organized, active play and activities that promote lifetime fitness.

We reaffirmed our commitment to performance excellence by receiving the 2013 Governor's Sustained Excellence Award and remain the first and only park and recreation agency in the State of Florida to be recognized by the Florida Sterling Council. Above all, we remain committed stewards of the health and wellbeing of residents.

Jack Kardys
Director
Miami-Dade Parks, Recreation and Open Spaces Department

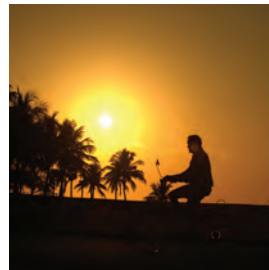
Who We Are...

Miami-Dade Parks, Recreation and Open Spaces



Mission We create outstanding recreational, natural and cultural experiences to enrich you and enhance the quality of life for our community for this and future generations.

Vision Connecting People and Parks for Life



- 260 parks
- 15 miles of beach
- 6 marinas
- 12 pools
- 5 dog parks
- 14 dog-friendly parks
- 42 Fit2Play camps
- 5 golf courses
- 1 mini-golf course
- 5 campgrounds
- 3 skate parks
- 7 nature centers
- 143 playgrounds
- 1 equestrian center
- Zoo Miami
- Deering Estate at Cutler
- Fruit and Spice Park
- 241 medians maintained
- 22 miles of public transitways maintained
- 149,000 tree plantings
- 15 outdoor fitness areas
- 5,279 acres of natural area, and more...

How We Help...



The Parks Foundation of Miami-Dade is a 501(c)3 organization which fosters the recreational, educational, environmental and cultural life of the Miami-Dade County community by encouraging and soliciting support for our County's park system through funding sources independent of government to meet the needs of the community.

The Parks Foundation goals and priorities are aligned with Miami-Dade Parks' Strategic Business Plan.

OUR GOALS

Support Open Space Master Plan **vision** and Recreation Plan implementation through **advocacy** and **fundraising** for capital development

Expand challenged youth and senior **programs** by offering scholarships for the disadvantaged and children with disabilities

Build capacity to provide stability to Miami-Dade Parks

Enhance the Foundation's visibility while achieving organizational **excellence**

Other foundations which solely support Miami-Dade Parks' programs and facilities include:



A 27-member **Citizens Advisory Committee** also makes recommendations to improve and promote Miami-Dade Parks' facilities and programs.

Board of Directors



Dick Anderson
President



Raul A. Garcia
Vice President



Maira Diaz-Giusti
Treasurer



Jim DiBernardo
Secretary



Sarah N. Artecona



Karen Evans



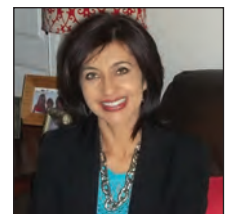
Jack Kardys



Grant Miller



Tim Hardaway



Ivonne Fernandez

Programs

Fit2Play

More than just a way to spend leisure time, recreation programs provided by Miami-Dade Parks, and supported by the Parks Foundation, are designed to ensure that all residents have access to quality, affordable activities that promote inclusiveness. Miami-Dade Parks' Fit2Play Out-of-School Program is being touted a national model for the promotion of good health. An ongoing study conducted by the University of Miami Miller School of Medicine shows Fit2Play is preventing obesity and decreasing hypertension in children ages 6-14. Study results are being published in the American Journal of Health Promotion.



FIT2PLAY EVIDENCE-BASED FORMULA

- Nutrition Education
- Recreational Games
- Introduction to Life Sports (golf, tennis, fishing)
- Homework Help

Fit2Play Partners



A partnership with the Alliance for a Healthier Generation is providing children in Miami-Dade Parks' Fit2Play Out-of-School Program healthy snacks.



Fit2Play Scholarship Fund

More than 580 children received scholarships to attend Fit2Play programs at low- or no-cost in 2013 thanks to donations to the Fit2Play Scholarship Fund. The fund was created to preserve recreation programming for low-income families. Dollars donated to the scholarship fund receive 100% matching funds.



UnitedHealthcare, through CBS EcoMedia's WellnessAd program, funded 38 Fit2Play Scholarships at Olinda Park. The \$74,000 investment also provided a shade structure over the fitness court, and a planting and beautification project at both Olinda and Jefferson Reaves Parks.



FACT:

Kids spend an average of 6.5 hours a day with electronic media - 45 hours a week.

Of the 224,000 children who live in unincorporated Miami-Dade County, 56% do not live within a mile of a Miami-Dade County recreation program.

Seven million children go to an empty house after school.

A juvenile in jail costs taxpayers \$117 per day. Preventative recreation programs at Miami-Dade Parks cost as little as \$5 a day.



The Fruit & Spice Park introduced a new summer program for children dubbed "Kids Grow Here Too!" which showcased the park's wide variety of tropical fruits, vegetables, spices and herbs.

Programs

Morning Mile

Together with AvMed, the Morning Mile Program expanded to all 42 Miami-Dade Parks' Fit2Play Summer Camps in 2013. Children begin their day with a run-jog-walk and receive incentives along the way. Developed by Fitness International, the program teaches children to incorporate physical fitness into their daily routines.



Five-time NBA All-Star Tim Hardaway, Olympic Coach and University of Miami Director of Track & Field and Cross Country Amy Deem, and Olympic hurdler Bershawn Jackson kick-off an expanded Morning Mile program, sponsored by AvMed.



Sebastian Deoleo, a 14-year-old who attends Miami-Dade Parks' Fit2Play Summer Camp at Hammocks Community Park, ran a total of 140-miles as part of the Morning Mile Program, sponsored by AvMed. Another 55 children also reached the 100-mile or more mark.

For every child who runs 100 miles over the course of the summer as part of the Morning Mile program, \$100 can be donated to the Parks Foundation's Fit2Play Scholarship Fund.



Tennis

Lifetime sports including tennis and golf are part of Miami-Dade Fit2Play programming.



A \$3,800 grant from the United States Tennis Association helped provide equipment to support tennis programming in Miami-Dade Parks. USTA's 10 and Under Tennis program is utilized in Fit2Play camps.



SNAG GOLF



Seth Pearman of Crandon Golf at Key Biscayne with junior golfers using SNAG golf equipment. Fit2Play utilizes the SNAG® Golf system which allows kids of all ages to learn the fundamentals of golf in any environment.



FACT:

Over the past two years, more than 153,000 miles have been logged by children participating in the Morning Mile Program at Miami-Dade Parks, sponsored by AvMed.

Touted as a national model, Fit2Play was recommended by both NRPA and FRPA in 2013.



frontpage

LEARNING
Test Your Park & Recreation Knowledge

The following question is a sample Certified Park and Recreation Professional (CPRP) examination question

Which of the following provides park and recreation agencies with the most effective financial mechanism to manage revenue-generating facilities such as golf courses, swimming pools, and campgrounds?

A. Enterprise fund
 B. Operating fund
 C. Maintenance fund
 D. Capital fund

The Certified Park and Recreation Professional (CPRP) is the national standard for all park and recreation professionals who want to be at the forefront of their profession. For more information on the CPRP Certification program, please visit www.nrpa.org/cprp.

HEALTH & WELLNESS
Slimmer in Miami
 Results of an anti-obesity program look promising.

IT'S ALL ABOUT DIET AND EXERCISE. After receiving the first-year results of a three-year study of its afterschool program, Miami-Dade Parks, Recreation, and Open Space is crowing about the community benefits of efforts to improve the health of its young residents.

The analysis by the University of Miami of children ages 6 to 14 who were enrolled in the Miami-Dade County Parks Fit2Play Program during the 2010-11 school year concludes the community-based intervention program is having a positive impact on the health of its participants. With parental permission, the children who enrolled in the Miami-Dade County Parks Fit2Play Program participated in pre- and post-measurement tests that provided a baseline for determining their fitness levels and nutritional needs, and helped track their progress. Each child's height and weight measurements were then converted to a BMI age- and sex-adjusted percentile. Waist and hip circumference, along with bicep, tricep, and shoulder blade skinfold measurements were also collected to determine body fat distribution. Physical fitness assessments included a sit-and-reach test, timed sit-up and push-up test, pacer test, and 400-meter run. Key results from the study follow.

Body Mass Index (BMI)—At their baseline testing, 56 percent of the program's participants were normal weight, 15 percent were overweight, and 29 percent were obese. BMI percentiles did not increase during the

ANSWER—A. Enterprise fund

12 Parks & Recreation | JANUARY 2013 | WWW.NRPA.ORG

Programs



Swim for Jenny Scholarship Fund

More than 1,500 children have been taught the basics of swimming, free of charge, through the Swim for Jenny Memorial Fund. The fund was created in 2011 after Jenny Nguyen, a 12-year-old Homestead girl, drowned at a friend's birthday party.



iSwim

- Pick a Pool
- Take the Pledge
- Swim Laps to Save Lives



Palm Springs North Swim Team members kick-off the annual iSwim event at Norman and Jean Reach Park, with Miami-Dade Commissioner Esteban Bovo, Jr. leading the countdown.

Miami-Dade Parks offered learn-to-swim lessons to nearly 12,000 people in 2013.



Swim for Jenny Champions Terisa Shelton, Manager of Integrated Marketing Finance at Assurant Solutions and Miami-Dade County Commissioner Barbara Jordan pose with Parks Director Jack Kardys at the Swim for Jenny Donor Appreciation Reception at the Deering Estate at Cutler.



Guests attending the annual Swim for Jenny Donor Appreciation Reception at the Deering Estate at Cutler receive an "Official Water Watcher" lanyard.

FACT:

Miami-Dade County leads the state in drowning deaths with an average of 45 a year.

Hospitalization costs in Miami-Dade for non-fatal drowning exceeds \$2.5 million.

Florida has the second highest number of drowning in the United States.



The Swim for Jenny Executive Committee helped raise more than \$150,000 for the Swim for Jenny Memorial Fund.



NFL Hall of Famer Larry Little brings together football greats from around the country to participate in the 7th Annual Larry Little Legends Golf Classic, benefiting the Swim for Jenny Memorial Fund.



Programs

Bike305



BIKE 305

CONNECTING COMMUNITIES

To promote health and wellness through cycling, seven Miami-Dade County-area mayors joined together to launch Bike305. The initiative showcases the 130 miles of bike trails throughout the county through a series of cycling-friendly events and a new user-friendly website, www.Bike305.com.

Miami-Dade County Mayor Carlos Gimenez joins fellow mayors and cycling enthusiasts for Bike to Work Day. Left to right: Olympic cyclist Nelson Vails, Miami-Dade County Mayor Carlos A. Gimenez, Pinecrest Mayor Cindy Lerner, Cutler Bay Mayor Ed MacDougall and Key Biscayne Mayor Franklin Caplan.



Ron Marini & Associates Tax Attorneys donate three new bicycles to the Parks Foundation.



DID YOU KNOW ?

More than 1,300 children have received bike safety education in Miami-Dade Parks since 2010 with the help of the University of Miami BikeSafe® program.

Membership



Another 127 individuals became members of the Parks Foundation of Miami-Dade in 2013, bringing the total number of memberships purchased to 371.

Valuable discounts to Miami-Dade park attractions and events are just some of the rewards for Parks Foundation members. Your support allows us to continue offering outstanding recreational, natural and cultural experiences in Miami-Dade County.



Learn more at liveaparklife.org

Troops for Fitness



Army National Guard veteran and amputee Laura Ortiz is among the first of two dozen veterans to be hired to enhance fitness and recreation programming throughout Miami-Dade, as part of \$192,500 Coca-Cola Troops for Fitness grant made possible by NRPA. Veterans are charged with helping thousands of Miami-Dade residents get fit and discover the joys of being active.



**National Recreation
and Park Association**

Programs

Active Adults 55+

Active adults 55+ are learning how to self-manage chronic diseases and prevent slips and falls through workshops offered at more than a dozen park sites, made possible by the Alliance for Aging.



Active adults 55+ celebrate National Walking Day at Tropical Park. More than 300 seniors continue walking at Miami-Dade Parks after participating in the Walk with Ease program. The program, which provides strengthening, stretching and motivational strategies, was facilitated by the Health Foundation of South Florida.



A health and wellness fair at Country Village Park was just one of several age-friendly initiatives made possible by a \$70,000+ grant from Pfizer. Low impact fitness classes and tennis for active adults 55+ will be launched at multiple park sites in 2014.



Disability Services



Disabled veterans enjoyed the sports of archery, sports shooting, kayaking and swimming through the COVERT (Connecting the Outdoors with Education, Recreation and Training) Project, made possible through a Department of Defense Grant.

Miami-Dade Parks participated in the 32nd Junior Orange Bowl Sports Ability Games which allows children with disabilities to expand their horizons. Left to right: Brian Douglas, Djabril Lamprecht, Jerald Garcia, James Anuff, Lissie Montoya and Alijah Jackson.



Physically impaired and blind individuals learned how to participate in triathlons alongside the general public as part of the first ever paratriathlon clinic, made possible by Achilles International and USA Triathlon.

DID YOU KNOW ?

Miami-Dade Parks' Disability Services offers basketball, track and field, bowling, swimming and bocce for adults with intellectual disabilities.

Programs

Focus on Parks



Miami-Dade children connected with nature through a new program dubbed Focus on Parks, presented in partnership with the National Park Service, Florida State Parks, HistoryMiami and generous sponsors including Whole Foods - Coral Gables and Tiger Direct.



TigerDirect.com

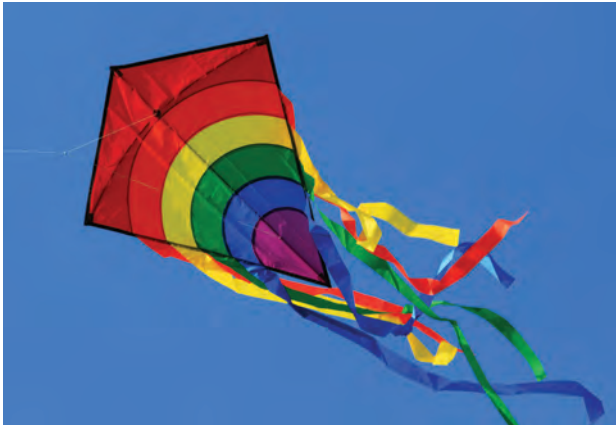
Through a series of field trips, middle-school age children document through the lens of a camera the connections they experience at parks, and ultimately, become interested and protective of our history, culture and environment. 2014 sessions begin in January with sponsor, Macy's.

DID YOU KNOW ?

Our programming partnerships engage over **14,600 youth** annually participating in youth sports at over **44 parks** throughout Miami-Dade. Sports include tackle and flag football, softball, soccer, mini soccer, roller hockey and more.

Extreme Sports

Miami-Dade Parks continued to introduce popular, non-traditional sports to residents through private-sector partnerships.



Kite-Making & Flying at Haulover Park

FACT:
More than 10,000 guests took advantage of Miami-Dade Parks EcoAdventures and nature centers in 2013.



Trail Glades Sport Shooting Range



Extreme Paintball at Homestead Air Reserve Park



Skate Parks

EcoAdventures



The Sunset & Moonlight EcoAdventure out of Crandon Marina offers guests spectacular views.

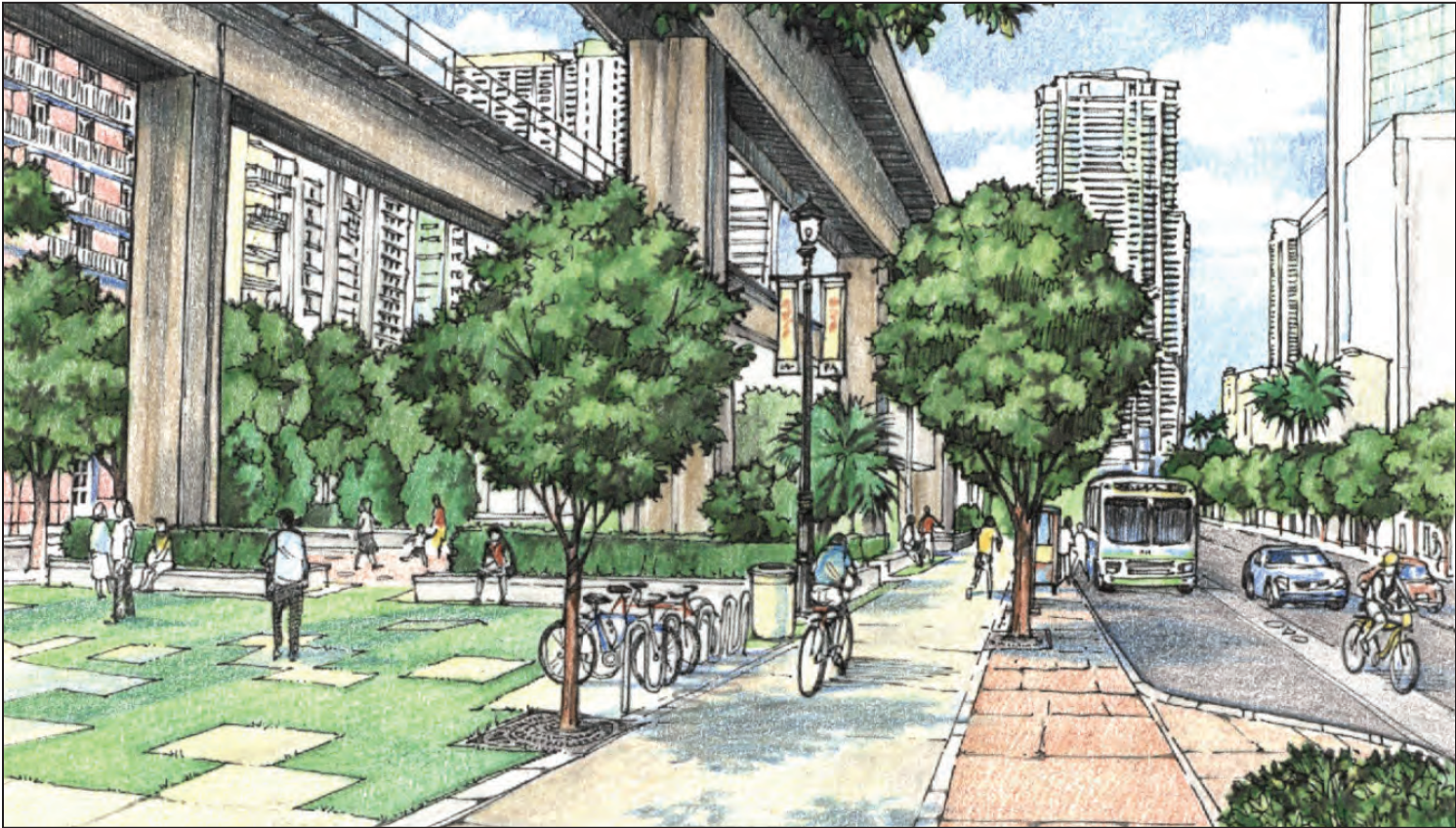


Archery instruction is the latest addition to Miami-Dade Parks' EcoAdventure programs.

Projects

Partnerships with like-minded foundations, individuals, corporations and other governments have allowed the Parks Foundation and Miami-Dade Parks to improve existing facilities and develop new projects to enhance the public realm.

Brickell Promenade



The development of Brickell Promenade is part of a larger vision to enhance the M-Path, a 10-mile paved multi-use trail beneath the elevated Metrorail guideway. A \$1 million Transportation Alternative Program grant will help fund the project.

Miami Mobile



Currently in testing, the Miami Mobile application, developed by IBM, is designed to support the maintenance of Brickell Promenade, a proposed transit-oriented public space along Metrorail's Brickell Station. Miami Mobile will promote Brickell-area businesses and events by providing information and incentives to consumers, while also providing transit experts meaningful data on ridership patterns.



Technology Learning Centers



Children and adults celebrate the opening of a Technology Learning Center (TLC) at Westwind Lakes Park. Designed to expand community access to Wi-Fi and computers, the TLC's are sponsored by the South Florida Digital Alliance and AT&T. The first five centers are up and running with six more expected to open in 2014.



Park-School Partnership



State Farm's Youth Advisory Board granted \$31,240 to the Parks Foundation which will allow students at TERRA Agricultural Research Institute to create a beetle-rearing laboratory. The Lili beetles are a chemical-free means of controlling air potato plants which stifle and destroy native landscaping.



FACT:

About half of Miami-Dade County's 80 nature preserves are negatively impacted by the air potato vine.



Under the supervision of Natural Areas Management and the USDA, *Lilioceris cheni* (Lili) beetles are being used to control the invasive Air Potato Vine at Kendall Indian Hammocks Park. Air potato density in the park has been reduced by 40-percent.



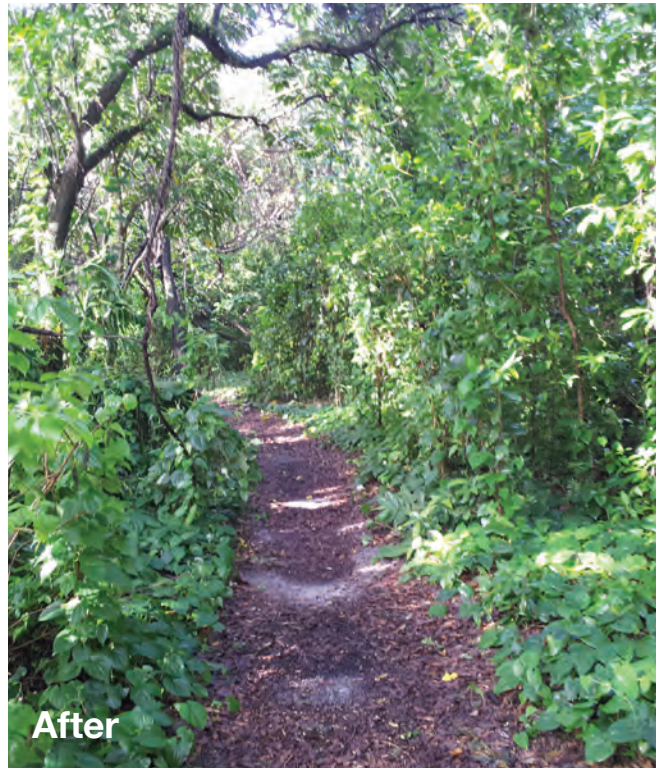
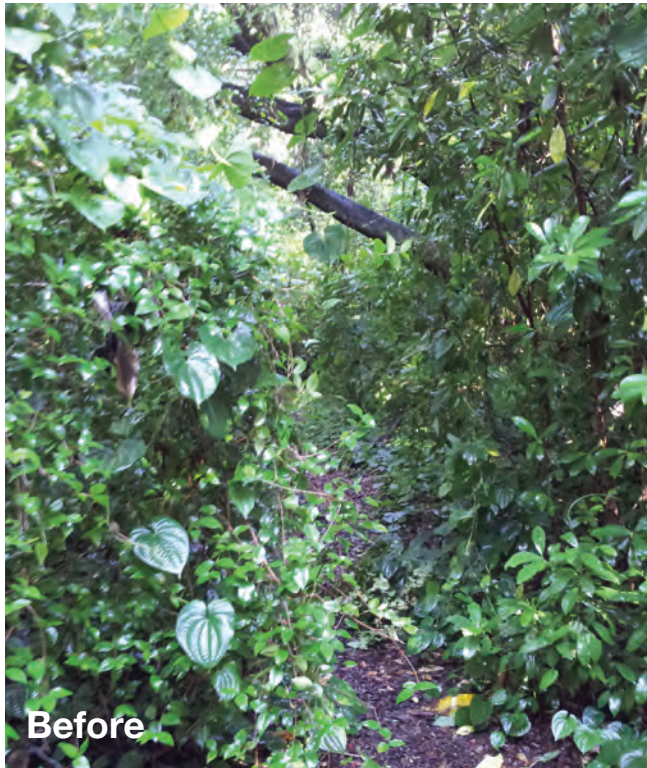
Interpretive trails were established at Kendall Indian Hammocks, Pineshore Pineland, Deering North and Cutler Wetlands in 2013.

DID YOU KNOW?

Wi-Fi hotspots have been installed at 18 park locations in Miami-Dade with another 100 planned for 2014.

Projects

Park-School Partnership



Trails at Kendall Indian Hammocks Park were refurbished and improved, thanks to a \$15,000 Great American Trails grant from the Darden Foundation - Longhorn Steakhouse, through the National Recreation and Park Association.



Gratigny Plateau Park



In a first-of-its-kind partnership, three empty lots in an underserved area of northwest Miami-Dade are being transformed into a neighborhood park with the help of corporate donors, local contractors and ABC's Local 10.



Gratigny Plateau Park

Led by Miller Construction, crews clear, grub and survey the Gratigny Plateau Park site. Plans for the park include walkways, fitness stations, a toddler playground, park benches and a butterfly garden. The project is expected to be complete in 2014.



Parks Director Jack Kardys (left) joins Commissioner Jean Monestime (center), Local 10 anchors Laurie Jennings and Calvin Hughes (right) and others to break ground on Gratigny Plateau Park.



Artist Romero Britto created an original painting as part of a series of live on-air auctions to raise money for Gratigny Plateau Park. The painting sold for \$10,500.

Projects

Ronald Reagan Equestrian Center



Just in time for the “World Cup” of Paso Fino events, the Mundial Caballos de Paso Confepaso, an expanded 150,000 square-foot equestrian center with two additional covered rings was unveiled at Tropical Park. Senator Javier D. Souto is leading efforts to make the center a destination for international equestrian, livestock and sporting events.

Ocean Rescue Facility



Commissioner Sally A. Heyman led a ribbon cutting of the new Ocean Rescue Facility at Haulover Park. Built with Building Better Communities Bond dollars, the facility houses lifeguards who patrol Miami-Dade’s public beaches.

FACT:

Miami-Dade County completed 93 construction projects in 2013 valued at \$47 million.

Open Space Master Plan

Connecting great parks and public spaces through greenways and trails is a major component of the Open Space Master Plan, which guides the development of the public realm. Two new trails came online in 2013, adding another 11+ miles to Miami-Dade County's trail system.



Snake Creek Trail (North) - The newly opened 3.4 mile Trail along Miami Gardens Drive features a 10-foot wide asphalt surface connecting parts of North Miami Beach, Miami Gardens and unincorporated Miami-Dade. Amenities include two landscaped mini-parks with rubberized play climbers for tiny tots, rain shelters, benches and bicycle racks.



Black Creek Trail (South-West) - Extending from Larry and Penny Thompson Park to Black Point Park and Marina, the 8.4 mile Black Creek Trail is now widened, resurfaced and enhanced with additional trail segments. Amenities include landscaping, wayfinding signage, rest areas and small shelters.

River of Grass Greenway - At the request of the National Park Service and with the help of a \$1.5 million grant, Miami-Dade Parks is managing the planning of the River of Grass Greenway, a 12-14 foot wide corridor through the Everglades which will extend from Miami-Dade's Krome Avenue to Naples.

Playgrounds



Miami-Dade County Commission Chairwoman Rebeca Sosa dedicates a new playground at Coral Villas Park, one of eight playgrounds added or enhanced in 2013.

DID YOU KNOW ?

There are more than 130 miles of bicycle trails throughout Miami-Dade County, with the goal of reaching 500 miles.

Projects

Outdoor Fitness



Free and easy-to-use outdoor gym equipment is now available at 15 parks across Miami-Dade, with more installations on the way. This new Fitness Zone at Blue Lakes Park was made possible by the Trust for Public Land.



Commissioner Audrey Edmonson tries out the fitness equipment at the newly reopened Olinda Park.



Seven domino tables and three checkers tables, designed to capture the local flavor of the Greater Miami community, replaced makeshift furnishings at the newly dedicated Domino Park.

Golf Improvements



A dramatic makeover featuring new greens, tees and fairways was completed at the 18-hole Palmetto Golf Course in 2013.

FACT:
The rate of obese and overweight adults in Miami-Dade is more than 67-percent.

Deering Point Improvements



Miami-Dade County Vice Chair Lynda Bell ushers in improvements at Deering Point, including a new restroom building and picnic shelters. Deering Point is the only site within 13 miles that offers free public access to Biscayne Bay.

Beach Clean Up



Commissioner Bruno A. Barreiro whose district includes Miami Beach regularly participates in beach clean-up activities.

DID YOU KNOW ?
Miami-Dade Parks' golf courses have "Got Your Game." Greens fees range from \$6 - \$225, offering prices for all pocketbooks and challenges for every skill level.

Events

Youth Sports Championship Series

With the help of private-sector support secured through the Parks Foundation, countywide special events that provide rich and diverse cultural experiences for residents and visitors are thriving. More than 20 community events, movie nights, concerts, festivals and tournaments are hosted each year.



As a result of the Joint Roundtable on Youth Safety, established by Miami-Dade County Mayor Carlos A. Gimenez and Miami-Dade County Public Schools Superintendent Alberto M. Carvalho, the Youth Sports Championship Series is engaging hundreds of our children in organized, active play. Football, cheer & dance and soccer competitions were hosted in 2013, in partnership with local non-profits. Team challenges in tennis, golf, track & field and more are slated for 2014.



The Gwen Cherry Bulls and Overtown Tornadoes at the 6th Annual Sean Taylor Football Classic.



Team Kendale Lakes-Lindgren Acres at the Miami Soccer Festival 2013 at Kendall Soccer Park.



Pop Warner volunteers present Mayor Carlos A. Gimenez with an Award celebrating Youth Sports Championship Series events.

West End Holiday Magic



Commissioner Juan C. Zapata coordinated the first-ever West End Holiday Magic event, presented by Lennar, at Kendale Lakes Library and Olympic Park, featuring light displays, choirs, snow days and a host of other holiday activities for young families.



FACT:

An average of 85-percent of all Miami-Dade registered boats access our ramps, wet slips, dry storage and marina facilities.

Golden Veterans Parade



Miami-Dade County Commissioner Jose Pepe Diaz, chairman of the County's Military Affairs Award Board, marches along Flagler Street as part of the Golden Veterans Parade 50th Anniversary Commemoration, presented by Hershey's. Miami-Dade Parks coordinated logistics.

Blue Water Fishing Classic



Team Westrec shows off their catch at Crandon Marina as they compete for \$20,000 in cash and prizes as part of the 10th Annual Blue Water Fishing Classic presented by Westrec. The tournament launches from all six Miami-Dade marinas.

DID YOU KNOW?

More than 101,000 boats were launched from Miami-Dade Parks' marinas last year.

Events

Love-In Party in the Park



An estimated 4,500 fans turned out for the 10th Annual Love-In Party in the Park sponsored by Magic 102.7, Catholic Health Services and Firehouse Subs. The outdoor festival and concert celebrating the music of the 60's, 70's and 80's, featured Grand Funk Railroad and Blues Image, along with arts & crafts, classic cars and more.



Sixth Annual Agricultural Horse & Cattle Show

The Sixth Annual Agricultural Horse & Cattle Show welcomed 60,000 attendees over three days in 2013. With representatives from 24 countries and breeders from 18 states, this Miami-based event has become a premier destination for the marketing of cattle and genetics, and an opportunity to further promote Florida's agriculture industry.



Noches Tropicales

The popular Noches Tropicales Concert Series, presented by Target in 2013, celebrated its 8th season at Tropical Park. Inaugurated by Miami-Dade County Commissioner, Sen. Javier D. Souto, Noches Tropicales has showcased more than 30 evening concerts bringing affordable arts and entertainment to more than 40,000 patrons.



A lighted outdoor dance floor has become a staple of the Noches Tropicales Concert Series at Tropical Park.

Tropical Nights

Expanding on the successful Noches Tropical Concert Series, free concerts were presented at multiple venues featuring Latin Jazz, Caribbean Reggae, Salsa and Swing. Made possible by a \$100,000 grant from the Knight Foundation, more than 10,000 patrons have been entertained over the past two years.



Edwin Bonilla and his Latin Jazz All-Stars kicked-off the 2013 Noches Troicales/Tropical Nights Concert Series at the Miami-Dade County Auditorium.



A pre-concert VIP reception, sponsored by Bacardi, Publix Sabor™ and Coca-Cola, opened the Tropical Nights concert series.



Events

Ribfest



Ribfest returned to Zoo Miami for a second year. National ribbers competed for best ribs trophies and bragging rights at this three-day outdoor grilling extravaganza. A \$13,500 grant from the Tourist Development Council helped make the event possible.



In the Company of Women



Women's rights pioneer Roxcy Bolton made a guest appearance at the 25th Annual In the Company of Women Awards presented by Macy's and Enterprise Holdings. The event pays tribute to outstanding Miami-Dade women during Women's History Month. Bolton helped found the Women's Park, the first park in the nation dedicated to women.



Fruit & Spice Park Events



Diverse events add the spice to Fruit and Spice Park, including the annual Asian Culture Festival, Redland Summer Fruit Festival and the new Redland GrowFest.

4th of July Spectacular



The annual 4th of July Fireworks Spectacular at Black Point Park & Marina, made possible by Miami-Dade County Commissioner Lynda Bell, Cutler Bay, Palmetto Bay, Publix Supermarket Charities and other generous sponsors, entertains an estimated 10,000 people.

Volunteers

Corporate and individual volunteers play an integral role in greening our community. More than \$4.5 million in savings was realized as a result of volunteers donating their time and talents to parks programs and events.



Students from Barry University give the parking lot at Haulover Park a fresh coat of paint as part of Freshmen Experience Day, a service-oriented program for incoming students.



Volunteers plant a hedge at Olinda Park as part of a beautification project in honor of September 11th. The National Day of Service and Remembrance featured more than 160 volunteers from UnitedHealthcare, EcoMedia, AARP, Miami Dade College and Miami Dolphins Special Teams.



Basketball posts were painted as part of the annual Martin Luther King, Jr. Day of Service at West Perrine Park. More than 490 volunteers participated.





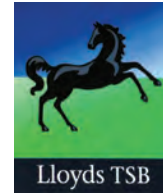
Children all around the world volunteer as part of Global Youth Service Day. The Boy Scouts were among those participating in a planting and beautification project at Chuck Pezoldt Park.



Play with a Purpose donated \$3,800 for the planting of sea oats in dunes along Crandon Park Beach. The sea oats and dunes help prevent beach erosion.



Volunteers from Lloyds Bank planted Sea Grapes at Haulover Park, part of the bank's annual corporate giving and volunteer efforts.



More than 100 volunteers planted native trees as part of a restoration project at Pelican Island, thanks to a \$7,500 grant from the Florida Inland Navigation District.

DID YOU KNOW?

We host four Signature Volunteer Events yearly with over 800 volunteers a year:

- Martin Luther King, Jr. Day of Service
- Global Youth Service Day
- 9/11 National Day of Service and Remembrance
- National Public Lands Day

Environment

More than just places for fun and games, parks and open space provide a multitude of environmental benefits to people and wildlife – from conserving natural ecosystems to sustaining clean air and water to providing the ecological framework needed for economic sustainability.

The Community Image Advisory Board (CIAB), chaired by Miami-Dade County Commissioner Dennis Moss, the CIAB is a multijurisdictional collaborative dedicated to creating beautiful gateways, corridors and connections through maintenance and aesthetic improvements.



The CIAB's input can be seen through programs such as: Million Trees Miami, Adopt-A-Road, Litter Reduction education programs, metrorail station clean-ups and enhancements.



The Downtown Development Authority renewed an agreement with the Community Image Advisory Board providing \$145,000 to ensure enhanced cleaning and greening services in the Downtown Miami area.



Million Trees Miami

Million Trees Miami was the charity of choice for the Red Dot Art Fair Art event.



In support of Million Trees Miami, Commissioner Dennis C. Moss joined the International Women's Zionist Organization, Florida to plant more than 140 trees at Haulover Park.



DID YOU KNOW?

Million Trees Miami is a communitywide effort to plant one million trees by 2020 in order to achieve a 30-percent tree canopy. To date, 149,674 trees have been planted.

FACT:

About half of Miami-Dade County's 80 nature preserves are negatively impacted by the air potato vine.



This poster was among the winners of the 9th Annual Clean-Up and Green Up Poster Contest, sponsored by the Community Image Advisory Board. The contest, open to Miami-Dade County students in grades K-12, is designed to get children thinking about the aesthetics of the community. More than 350 children participated.



Researchers from Natural Areas Management survey Matheson Hammock Park for *Lumitzera Racemosa*, as part of a partnership with the Everglades Cooperative Invasive Special Management Area (ECISMA), to map and treat invasive plants.

Currency Collection Bins



More than \$1,500 has been earmarked for Miami-Dade Parks and Animal Services from Currency Collection Bins installed at Miami International Airport. Travelers are encouraged to donate both foreign and U.S. currency, thanks to legislation championed by Commissioner Sally A. Heyman.

DID YOU KNOW?

Approximately 80 natural areas are maintained by Miami-Dade Parks.

Environment

Adopt-A-Tree



This Yellow Poinciana tree at Eden Lakes Park was one of a number of trees planted around Miami-Dade County in memory of a loved one, part of the Adopt-A-Tree Program.

The UPS Foundation granted \$25,000 to the Parks Foundation to restore upland hammocks at Highland Oaks Park. At least 75 native trees will be planted in 2014 to enhance the buffer between recently restored wetlands and active recreation areas at the park.



As part of the 2013 NASCAR Race to Green Program, Homestead Miami Speedway facilitated the donation of 45 trees planted at Rockland Pineland Preserve. Included in the donation, mulch made from recycled car tires.



DID YOU KNOW ?

- Trees save energy and reduce storm water run-off.
- Trees increase property values by making communities more appealing.

Wildlife Conservation



Part of the Biscayne Bay Coastal Wetlands Project and the Comprehensive Everglades Restoration Plan (CERP), the Deering Estate Flow-way and Cutler Slough Rehydration Projects are part of a larger effort to help restore the quantity, quality, timing and distribution of fresh water in the South Florida ecosystem. Expedited by the State of Florida and the South Florida Water Management District, the restoration of seasonal water flows, which was completed in Spring 2013, is anticipated to improve habitat for ferns, bromeliads, and orchids, including rare, endangered, or threatened species found within the surrounding natural areas.



Environmental Science and multi-disciplinary learning programs like the EcoAcademy, NESTT-Nurturing Environmental Stewards of today and tomorrow, Wildlife Conservation Program and various Field Study Trips offered by the Deering Estate at Cutler, ZooMiami and various nature centers connects students, teachers, youth groups and their families to the many natural and cultural resources in our community while improving academics and helping them to think critically about the world around them.

FACT:

Studies indicate that K-12 learning increases from 5% retention to 75% when students engage in hands on, experiential learning.



A \$13,500 Challenge Grant from the Andrew Sabin Family Foundation helped pay for a brand new "Turtle Truck" which patrols Miami-Dade beaches throughout turtle nesting season.



DID YOU KNOW ?

More than 6,386 sea turtle nests have been documented and more than 585,000 live hatchlings released since Miami-Dade's Sea Turtle Conservation Program was started in 1980.

Environment

Historic Preservation



Stabilization, rehabilitation and restoration projects are ongoing at the Deering Estate at Cutler. A gift in honor of the late Charles Deering McCormick, Charles Deering's grandson, is providing interior and exterior surface maintenance to the historic buildings, while structural stabilization and restoration of the façade of the Richmond Cottage was provided by the Building Better Communities Bond Program.



Paleo-Indians, Tequestas, Seminoles, Afro-Bahamians, and Anglo-Americans have at different times, lived on the Estate grounds, each new group literally following in the footsteps of the preceding group. In 2013, the Estate received a \$75,000 grant from the Florida Department of State to conduct an archaeological survey and assessment of the Estate grounds.

DID YOU KNOW ?

The Deering Estate at Cutler was featured on the HGTV premiere of America's Spookiest Homes. The Estate offers monthly ghost tours led by interpretive staff and the League of Paranormal Investigators, our collaborative partner.

Zoo Biology



Joint research initiatives and internship opportunities are just the first steps in a research partnership forged by Zoo Miami and Florida International University. Following a ceremonial signing in 2013, efforts began to create a major wildlife conservation campus. The partnership is dubbed “Zoo Biology.”



Ten Jamaican Island iguanas were hatched at Zoo Miami in 2013, making it the first zoo to reproduce the reptiles more than once. *Photo courtesy of Nicole Atteberry.*



Panama, a harpy eagle hatched at Zoo Miami, was sent to the Republic of Panama’s Summit Zoo. Panama is now a celebrity throughout the country.

DID YOU KNOW ?

Zoo Miami enjoyed record attendance in 2013 with more than 900,000 visitors.

Environment

Maintaining the Public Realm

Miami-Dade Parks, Recreation and Open Spaces embraced its role as the keeper of countywide green spaces that enhance the beauty and environmental quality of neighborhoods. Through the Right of Way Asset and Aesthetics Management (RAAM) Division, landscape maintenance (mowing, litter collection, edging, weed removal, tree trimming, etc.) was performed on:

- 241 medians
- 22 miles of Metrorail right-of-way
- 20.5 miles of busway

RAAM also:

- Planted 1,131 trees
- Watered and fertilized 74,409 trees



Newly landscaped median at Coral Way and 128th Avenue.



Future

With a vision of connecting people and parks for life, the Parks Foundation and Miami-Dade Parks forged ahead with new projects and initiatives designed to create a greener, more livable and economically vibrant Miami-Dade.



One of the world's most glamorous sporting events, the Sony Open is staying in Miami-Dade for the next 50 years. A renegotiated agreement with the International Players Championship will provide up to \$50 million in improvements at Crandon Park Tennis Center, at no cost to taxpayers. Amenities will include new stadia, dining options and player amenities.

With that 50-year commitment also comes a promise to provide opportunities that promote health and fitness through the game of tennis. Miami-Dade children will receive 500 tickets to the Sony Open each year, and the Parks Foundation will utilize a suite to strengthen the bonds between professional athletes, the corporate community and parks programs and services.

DID YOU KNOW ?

The 14-day Sony Open creates an estimated \$300 million dollars in economic impact for Miami-Dade County.

Future

Arcola Lakes Senior Center



Miami-Dade County's first recreational facility specifically designed for use by active adults 55+ is scheduled to open in 2014. The 14,000+ square foot Arcola Lakes Senior Center will include entertainment rooms, an arts and crafts room, a ceramics room, exercise room, banquet meeting hall, therapeutic pool and more.

Miracle League



Children with special needs are playing baseball through the Miracle League of Miami-Dade. The Parks Foundation granted \$50,000 to the non-profit to help build a permanent special needs field at Tamiami Park, with support from the Miami Marlins Community Foundation. The new ballpark is currently in design.



Seasons 52



Seasons 52 is coming to Bill Bird Marina at Haulover Park. The restaurant, which offers seasonally-inspired dining choices and an award-winning international wine list, is part of a series of upgrades slated for the 245-acre property. A groundbreaking is expected in 2014.

DID YOU KNOW ?

Nearly 40 local municipalities, universities, state and national park agencies are members of the South Florida Parks Coalition. Coalition members meet to share knowledge and expertise with the goal of creating a model park system.

FACT:

Nearly 30-percent of park operations are supported by earned revenues, not tax dollars.

Zoo Miami: Mission Everglades



Ground is breaking on Mission Everglades at Zoo Miami, a new \$40 million exhibit that will showcase the many ecosystems and animals within the River of Grass. Zoo Miami is also negotiating a \$980 million proposal with 20th Century Fox to add a theme and water park outside the zoo which could rival Orlando's greatest attractions.

Miami Watersports Complex



Extreme sports are coming to Amelia Earhart Park. The new Miami Watersports Complex will feature cable-driven wakeboarding and wakesurfing, as well as more traditional boat-powered wakeboarding and skiing. Patterned after a similar complex in Orlando, construction is set to begin in 2014.

Deering Theater



Theater is coming to the Deering Estate in 2014, part of an expansion of the Artist in Residence Program. Upgrades to the existing Visitor Center Auditorium are underway allowing it to serve as a black box community theater.

Recognition of Achievements

As the third largest parks system in the nation, Miami-Dade and the Parks Foundation continued to be recognized as an industry leader.



The Miami New Times voted Matheson Hammock Park the best park in Miami. Crandon Park and Greynolds Park also made the “Top 10” list.

Accredited since 1995 by the Commission for Accreditation of Park and Recreation Agencies (CAPRA), Miami-Dade Parks is continually recognized for its high standards and contributions to health and wellness in the Miami-Dade community.



The Parks Foundation participated in Give Miami Day, a 24-hour online giving event, sponsored by the Miami Foundation which raised a record \$3.2 million.



DID YOU KNOW ?

Miami-Dade Parks is a three-time winner of the National Gold Medal Award from the National Recreation and Park Association.



Miami-Dade Parks received the 2013 Governor's Sustained Excellence Award, reaffirming its commitment to systematic performance improvement. It remains the first and only park and recreation agency in the State of Florida to be recognized by the Florida Sterling Council.

Six innovative programs in Miami-Dade Parks were recognized in 2013 by the National Association of Counties, including:



- Park-School Partnership for Nature Preserve Management
- Parks Access & Equity Plan Building Livable Communities One Neighborhood at a Time
- Right of Way and Assets Management Work Distribution Center
- Bicycle Safety Education Program
- Red Fields to Green Fields
- Girls Empowerment and Mentoring Program

DID YOU KNOW ?

Miami-Dade Parks successfully administers more than \$20 million in state and federal grants that provide funding for land acquisition, capital development and more.

Recognition of Achievements



Miami-Dade Parks' Girls Empowerment and Mentoring Program (GEM), which inspires girls ages 11 to 16 with workshops and mentoring opportunities, received recognition in 2013 from the National Association of Counties (NACO). GEM builds self-esteem, provides quality arts experiences and strengthens the girls' connection to community.



The City of Miami Beach gave Miami-Dade Parks' Beach Maintenance Operations high marks for cleanliness. Last year, more than 1,234 tons of debris were removed from a 15-mile stretch which includes Miami Beach, Surfside, Bal Harbour and Sunny Isles Beach.

Showcasing a shared commitment to Miami-Dade County Youth, the Parks Foundation sold tickets to The Fair raising more than \$23,427 over the past two years for both non-profits.



A visionary plan for Haulover Park captured the attention of a pre-eminent landscape architecture organization. The Florida Chapter of the American Society of Landscape Architects bestowed its 2013 Award of Honor to Miami-Dade Parks Planning & Development Division.



The 2013 Active Leisure for Life Award was given to Miami-Dade Parks' Disability Services Division by the Florida Disabled Outdoor Association for providing people with disabilities opportunities to participate in inclusive accessible recreation.



DID YOU KNOW ?

Nearly 40-percent of Miami-Dade Parks operations are supported not by tax dollars, but by earned revenues.

Partners

The Parks Foundation of Miami-Dade and Miami-Dade Parks, Recreation and Open Spaces would like to thank the many partners who join with us each year to enhance, advocate, promote and celebrate the parks and open spaces that anchor our community. Every great community has a great parks system, and with your help we are working every day to create a more healthy, livable community for all.

\$25,000+

Marlins Foundation
NRPA
Sen Javier D. Souto, Dist. 10
State Farm
UnitedHealthcare
The UPS Foundation

\$10,000 - \$24,999

Andrew Sabin Family Foundation
Assurant ♥
AvMed ♥
Florida Blue Foundation
IMG
Santa's Enchanted Forest
Tourist Development Council
Westrec Marinas
WPLG, Local 10

\$5,000 - \$9,999

Enterprise Holdings
Howard Research and Development Corp.
Lennar Homes
Limonar Development Inc
Lynda Bell, Dist. 8 ♥
Macy's
Sally A. Heyman, Dist. 4
Service for Peace
Shoreline Foundation
Soccer 5 USA
Southeast Laborers District Council
The Sunshine Jazz Organization
The Produce Connection
Wasserman Media Group

\$2,500 - \$4,999

133 Servilla
AT&T
Audrey M. Edmonson, Dist. 3
Barbara J. Jordan, Dist. 1
Baseball Industry Growth Fund
BOMA ♥
Dade County Assoc of Fire Fighters #1403
Dade County Police Benevolent Assoc.
EEI Mobile
Esteban Bovo, Jr., Dist. 13
FPL
Gold Coast Beverage Distributors
Homestead Miami Speedway
Horsepower Electric

Jose "Pepe" Diaz, Dist. 12
Kiewit Infrastructure
Miami-Dade Ambulance Service
Play with a Purpose
Realty Associates
Rebecca Sosa, Dist. 6 ♥
Service for Peace
Village of Palmetto Bay

\$500 - \$2,499

Academica Management
AG Tech
AvMed
Awesome Boat Service
Baptist Health South Florida
Barry University
Bath Fitter
Beckman Coutler Foundation
Bercow Radell & Fernandez
Big Boned BBQ
Blue Time
Borinquen Health Care Center
Broyhill Manufacturing Co.
Bulk Express Transport ♥
Burger King
Capt. Harry's Fishing Supply
Car2Go
Churchill Downs
City of Florida City
City of Homestead ♥
Coconut Grove Bank ♥
Comcast
Community Bank ♥
Construction & Craft Workers
Cutler Bay Business Association
Dade County Farm Bureau
Dennis Carrino
El Dorado Furniture
Equipco ♥
Eston E. Melton
Evelyn Langlieg Greer, PA
Friends of Dccfw Inc
Genovese Joblove & Battista
Gloria Prado ♥
Granada Plaza
H&J Asphalt
HealthSouth
Horizon Properties of Miami
Inaugural Committee
iTransport ♥

Joanne Urquiola ♥
Joe Garcia for Congress
Kendall Investors 172
Keys Gate Charter School ♥
Kimley-Horn and Associates, Inc.
Kiwanis Club of Kendall ♥
KSAT-TV12
Lexus of West Kendall
Loggerhead Club & Marina
Mack Cycle and Fitness
Manchester Terminal ♥
Manny Miranda State Farm
Marriott
MAT Concessionaire LLC
Mercedes Benz of Cutler Bay
Mercedes Benz of Miami
Miami-Dade Broadband Coalition
Miami-Dade County Fair and Exposition
Miami Dolphins Foundation
Odebrecht Construction, Inc.
Peterson's Harley-Davidson
Pig In or Pig Out Cooking Team
Redlands Women's Club ♥
Rep Services, Inc.
River Marine Supply, Inc.
Robert M. Levy & Associates Inc.
Ronald L. Book PA
Rosemary E Helsabeck
Rudy Town Center
Sarah Artecona
Sea Tow
Skin & Bones
Slip-N-Slide Records
Smoke & Spice
Soil Tech Distributors ♥
South Florida Taxicab Association
Southland Mall
Sun Life Stadium
Sunshine State One-Call of Florida, Inc.
Sunstate Bank
Susan Ane-Vega ♥
The Continental Group ♥
The Miami Foundation
Therapy Charter Fishing Yacht
Tyre's Auto Service ♥
University of Miami
Up2Us
Waste Management ♥
Weiss Serota Helfman

♥ = Swim for Jenny supporter.

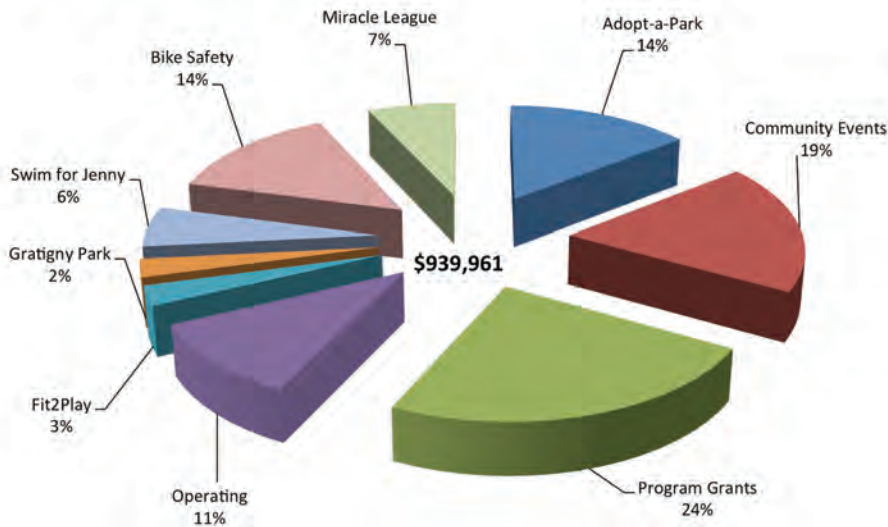
Program Summary

2013 Statement of Activities

	Unrestricted	Temporarily Restricted	Total
PUBLIC SUPPORT AND REVENUE			
Public Support:			
Contributions and corporate scholarships	\$ 585,479	\$ 238,557	\$ 824,036
Grants and contracts	-	161,175	161,175
In-kind revenue	19,180	-	19,180
Investment income, net	-	6,992	6,992
Net assets released from restrictions	443,283	(443,283)	-
Total public support and revenue	1,047,942	(36,559)	1,011,383
EXPENSES			
Program Service:			
Community Events	384,285	-	384,285
Prevention Programs (Bike Safety, Learn2Swim, Fit2Play)	121,738	-	121,738
Park Beautification	7,115	-	7,115
Fundraising events	11,290	-	11,290
Total program expenses	524,428	-	524,428
Supporting Services:			
Management and general	117,818	-	117,818
In-kind expenses	19,180	-	19,180
Total expenses	661,426	-	661,426
CHANGE IN NET ASSETS	386,516	(36,559)	349,957
NET ASSETS - BEGINNING OF YEAR	357,691	232,313	590,004
NET ASSETS - END OF YEAR	\$ 744,207	\$ 195,754	\$ 939,961

The December 31, 2013 financial statements were audited by Julian A. Preston, CPA, LLC in accordance with generally accepted accounting principles.

2014 Program Fund Allocations



Miami-Dade Parks Annual Guide



**Parks, Programs, Activities,
Attractions & Events**
www.miamidade.gov/parks



The first ever Miami-Dade Parks guidebook was distributed in 2014. A comprehensive guide of parks, programs, activities, attractions and events. This 36-page magazine style booklet gives residents a birds-eye view of all our park system has to offer. Now residents can find out about events happening throughout the year.

PARKS FOUNDATION OF MIAMI-DADE

2013
REPORT
ANNUAL



MIAMI-DADE
COUNTY

www.liveparklife.org

